

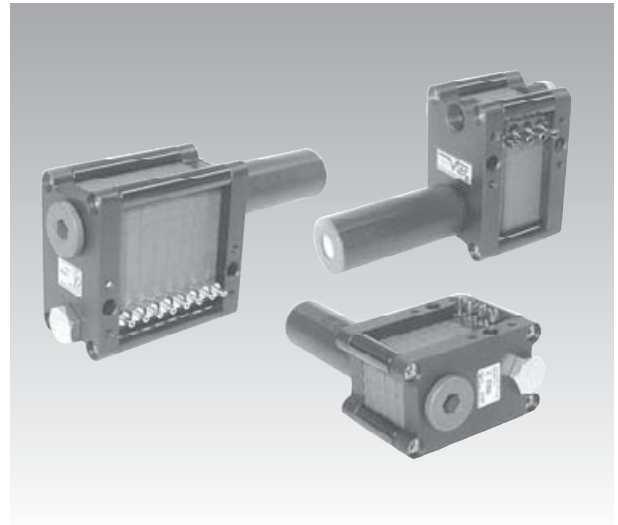
X – Minimultiple pump

Max.vacuum level	: -93kpa (-697,5mmHg)
Max.Flow rate	: 32NI/m x N stack
Supply air pressure	: 4-6bar Max, 7bar
Supply air type	: Dry compressed air
Working temperature	: -20°C to +80°C
Noise level	: 55-65dBA

Main advantages

This X-Minimultiple pump model uses individual pumps to make up the complete unit, each pump is in itself a multi stage ejector unit. The X-Minimultiple pump has the same external dimensions to that of the M-Minimultiple pump, however the internal ejector system is different to enable higher levels of vacuum to be achieved. The X-Minimultiple pump is a pump that bridges the gap between the High Flow VTM pump range and the High Vacuum VTH Range, giving a balance of the two. Each individual pump can be stacked together thus creating a modular manifold based system.

The advantages of this unit is that it can be operated using just one control valve whilst retaining individual vacuum lines separate to one another, therefore if any leakage or surface deformation occurs and one pad loses its vacuum, it does not effect the vacuum level in the other pads. Pumps can be stacked up from 2-16 units depending upon requirements. The pumps can have seal material options of Viton® & EPDM for corrosive and acidic applications.



Order no.

VTX5 x 6 - A3 D3 - 4 - V

①
②
③
④
⑤
⑥

① **Model** – Capacity equivalent to electricity motor pump size

• VTX5	– 0,05KW
VTX10	– 0,1KW

③ **Air supply control valve**

A1	– AC110V
A2	– AC220V
• A3	– DC24V

⑤ **Vacuum port, inner dia of tube**

2	– Ø2
• 4	– Ø4

② **Vacuum stack**

2 – 2 stack	10 – 10 stack
3 – 3 stack	11 – 11 stack
4 – 4 stack	12 – 12 stack
5 – 5 stack	13 – 13 stack
• 6 – 6 stack	14 – 14 stack
7 – 7 stack	15 – 15 stack
8 – 8 stack	16 – 16 stack
9 – 9 stack	

※ Remark : VTX5 maximum stack up to 16 stack (above 12 stack complete with 2 Silencer)
VTX10 maximum stack up to 12 stack (above 6 stack complete with 2 Silencer)

④ **Control valve & Solenoid terminal**

1	– Piston valve – DIN type without lead wire
2	– Piston valve – DIN type with lamp without lead wire
3*	– Piston valve – Connector type with 0,3m lead wire & lamp
D1	– Diaphragm valve – DIN type without lead wire Diaphragm
D2	– Diaphragm valve – DIN type with lamp without lead wire Diaphragm
• D3*	– Diaphragm valve – Connector type with 0,3m lead wire & lamp Diaphragm

※ Remarks : VTX5 – over 12 stacks
VTX10 – over 8 stacks ※ Using Piston valve
* : Only for DC24V

⑥ **Sealing**

No mark	– Standard (NBR)
• V	– Viton®
E	– EPDM

Characteristics

Model	max. vacuum -kPa(-mmHg)	Max. vacuum flow (NI/m)	air consumption (NI/m)	noise level (dBA)	weight (g)	min hose inner Ø (within 2m)		
						air supply	vacuum	exhaust
VTX5x2stack	93 (697.5)	24X2	43,2-48	55-60	67	∅2	∅2,5	3/8"X1
VTX5x3stack		24X3	64,8-72	55-60	80	∅2	∅2,5	3/8"X1
VTX5x4stack		24X4	84,4-96	60-63	247	∅4	∅2,5	3/8"X1
VTX5x5stack		24X5	108-120	60-63	255	∅4	∅2,5	3/8"X1
VTX5x6stack		24X6	129,6-144	60-63	281	∅4	∅2,5	3/8"X1
VTX5x7stack		24X7	151,2-168	60-63	299	∅4	∅2,5	3/8"X1
VTX5x8stack		24X8	172,8-192	60-63	317	∅6	∅2,5	3/8"X1
VTX5x9stack		24X9	194,4-216	60-63	335	∅6	∅2,5	3/8"X1
VTX5x10stack		24X10	216-240	60-63	353	∅6	∅2,5	3/8"X1
VTX5x11stack		24X11	237,6-264	60-63	371	∅6	∅2,5	3/8"X1
VTX5x12stack		24X12	259,2-288	60-63	389	∅6	∅2,5	3/8"X2
VTX5x13stack		24X13	280,8-312	60-63	417	∅6	∅2,5	3/8"X2
VTX5x14stack		24X14	302,4-336	60-63	435	∅8	∅2,5	3/8"X2
VTX5x15stack		24X15	324-360	60-63	453	∅10	∅2,5	3/8"X2
VTX5x16stack		24X16	345,6-384	60-63	471	∅10	∅2,5	3/8"X2
VTX10x2stack		93 (697.5)	32X2	86,4-96	60-63	67	∅4	∅4
VTX10x3stack	32X3		129,6-144	63-65	80	∅4	∅4	3/8"X1
VTX10x4stack	32X4		172,8-192	63-65	247	∅6	∅4	3/8"X1
VTX10x5stack	32X5		216-240	63-65	255	∅6	∅4	3/8"X1
VTX10x6stack	32X6		259,2-288	63-65	281	∅6	∅4	3/8"X2
VTX10x7stack	32X7		302,4-336	63-65	299	∅6	∅4	3/8"X2
VTX10x8stack	32X8		345,6-384	63-65	327	∅8	∅4	3/8"X2
VTX10x9stack	32X9		388,8-432	63-65	345	∅10	∅4	3/8"X2
VTX10x10stack	32X10		432-480	63-65	363	∅10	∅4	3/8"X2
VTX10x11stack	32X11		475,2-528	63-65	381	∅10	∅4	3/8"X2
VTX10x12stack	32X12		518,4-576	63-65	399	∅10	∅4	3/8"X2

VACUUM PUMP

Induce air in liters per minute (NI/m)

-mmHg -kPa	0	75	150	225	300	375	450	525	600	675
Model	0	10	20	30	40	50	60	70	80	90
VTX5x1stack	24	13	9	8	7	5	4	2,7	1,2	0,45
VTX10x1stack	32	21	17	15	14	11	9	5,4	2,4	0,9

Time in seconds to evacuate to vacuum level (sec/l)

-mmHg -kPa	75	150	225	300	375	450	525	600	675
Model	10	20	30	40	50	60	70	80	90
VTX5x1stack	0,258	0,796	1,516	2,4	3,56	4,91	6,896	10,16	19,19
VTX10x1stack	0,129	0,398	0,758	1,2	1,78	2,455	3,445	5,08	9,594

Dimensional Information

VTX 5 x (4~16)Stack 10

